

# ROCK DRILL

# 60 lb class

# SRD-75

*Dedicated to Quality....*

*....Committed to Support*

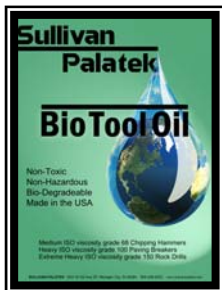
# Sullivan Palatek®

**Designed as a heavy duty Quarry drill suitable for drilling granite.**

- Forged alloy construction
- 3 drilling speeds; stop, 1, 2, 3, 1 or low speed for collaring and pulling from drilled hole
- Adjustable blowing capacity
- Replaceable chuck, 1" x 4 1/4" or 7/8" x 4 1/4"
- Internal oiler
- Optional Constant Feed inline oiler (6' 3/4" whip)
- Optional muffler
- Optional Wet Kit available
- One year Warranty
- Manufactured in USA



THOR™ TYPE DRILL



**KEEP TOOLS OILED,**  
USE ISO 150 ROCK DRILL OIL OR SULLIVAN PALATEK P/N SI 9019 BIO OIL ISO 150, MADE IN THE USA AND A RENEWABLE OIL SOURCE, SPECIALLY FORMULATED FOR ROCK DRILLS.

Specifications		
<b>Net Weight</b>	61 lbs	27.5 kg
<b>Length</b>	23.75 in	603 mm
<b>Bore</b>	2.625 in	67 mm
<b>Stroke</b>	3.22 in	82 mm
<b>Blows per minute</b>	2250	2250
<b>RPM</b>	200	200
Models, Part Numbers and Chuck Sizes		
<b>SRD 75-14</b>	1 x 4 1/4 in	25 x 108 mm
<b>SRD 75-74</b>	7/8 x 4 1/4 in	22 x 108 mm
<b>Air Inlet (MNPT)</b>	3/4 in	19 mm
<b>Air Consumption*</b>	98 cfm	2.77 m <sup>3</sup> /m
*estimated		

**FOR OPTIMUM PERFORMANCE, DO NOT OPERATE TOOL ABOVE 90 PSI (6 BAR) WORKING PRESSURE.**

**WARNING:**

**ALWAYS DISCONNECT THE AIR SUPPLY BEFORE CHANGING CHISELS OR DISMANTLING THE TOOL FOR SERVICE OR REPAIR. FOR MAXIMUM SAFETY WE ADVISE THE INSTALLATION OF A SHUT-OFF VALVE AT THE END OF THE AIR LINE.**

**DO NOT EXCEED 100 PSI (7BAR) WORKING PRESSURE.**



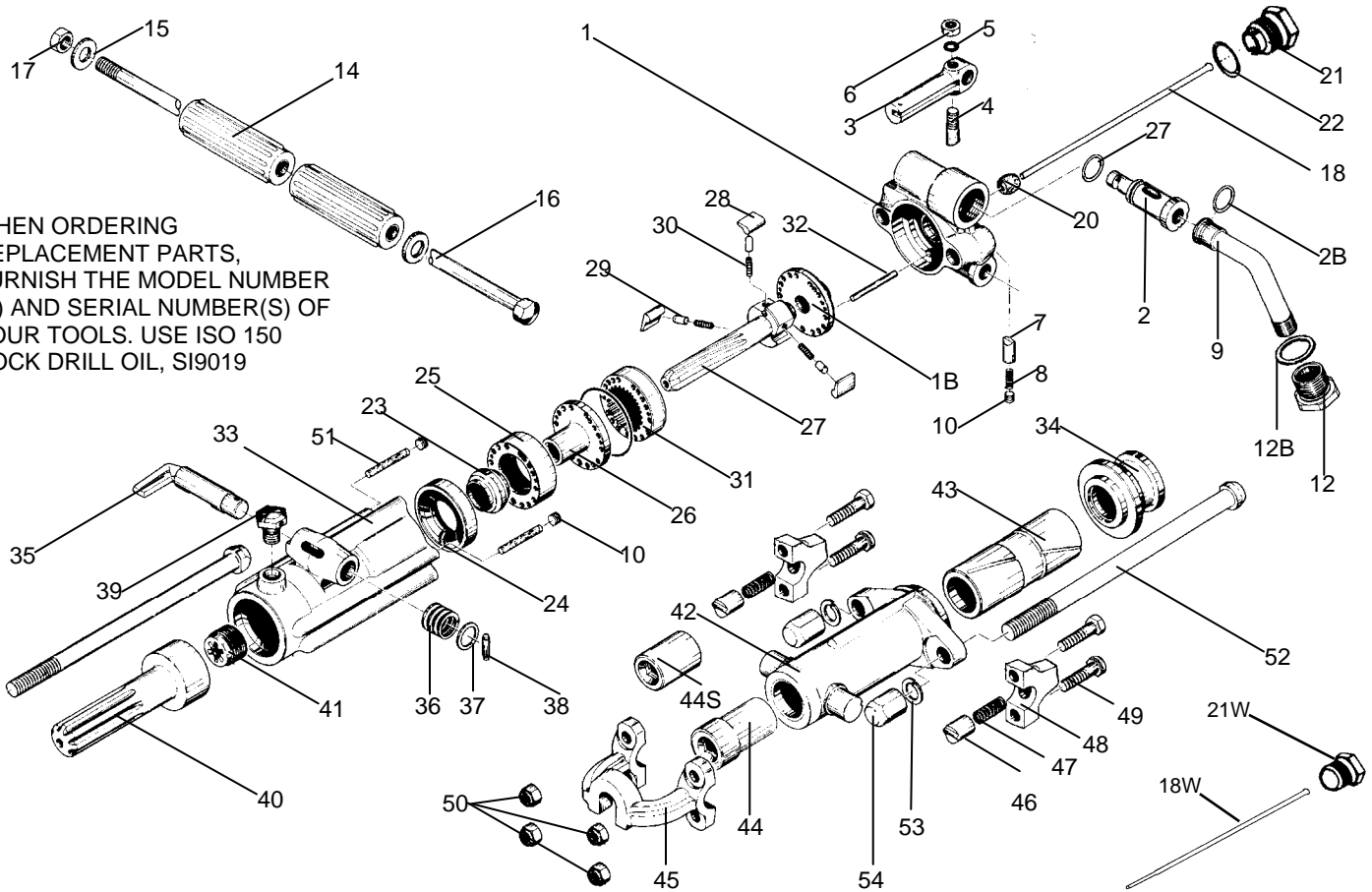
1201 West US Highway 20  
Michigan City, IN 46360

Ph: 800-438-6203  
Fx: 800-725-6203

info@palatek.com  
www.sullivanpalatek.com

# PARTS LIST ROCK DRILL 60 lb class SRD-75

WHEN ORDERING REPLACEMENT PARTS, FURNISH THE MODEL NUMBER (S) AND SERIAL NUMBER(S) OF YOUR TOOLS. USE ISO 150 ROCK DRILL OIL, SI9019



INDEX	PART	DESCRIPTION	INDEX	PART	DESCRIPTION
1	SI7501	BACKHEAD W/BUSHING	32	SI7532	VALVE DOWEL
1B	SI7501B	BACKHEAD PLATE	33	SI7533	CYLINDER
2	SI7502	THROTTLE VALVE	34	SI7534	FRONT WASHER BUSHING
2B	SI7502B	THROTTLE VALVE O-RING	35	SI7535	EXHAUST VALVE
3	SI7503	THROTTLE VALVE HANDLE	36	SI7536	EXHAUST VALVE SPRING
4	SI7504	THROTTLE VALVE HANDLE BOLT	37	SI7537	EXHAUST VALVE WASHER
5	SI7505	THROTTLE VALVE HANDLE WASHER	38	SI7538	EXHAUST VALVE PIN
6	SI7506	THROTTLE VALVE HANDLE BOLT NUT	39	SI7539	OIL FILLER PLUG
7	SI7507	DETENT PLUNGER	40	SI7540	PISTON
8	SI7508	DETENT SPRING	41	SI7541	RIFLE NUT
9	SI7509	AIR INLET SWIVEL	42	SI7542	FRONTHHEAD
10	SI7510	PLUG (3) (sub. 6620)	43	SI7543	CHUCK DRIVER
11	SI7511	SWIVEL O-RING	44	SI7544	CHUCK BUSHING 1" x 4 1/4" HEX
12	SI7512	SWIVEL NUT	44	SI7555	CHUCK BUSHING 7/8" x 4 1/4"
12B	SI7512B	SWIVEL NUT O-RING	44S	SI7544S	CHUCK BUSHING 7/8" x 3 1/4" HEX
13	SI7513	BACKHEAD PLUG	45	SI7545	STEEL RETAINER 1" x 4 1/4"
14	SI7514	HANDLE GRIP COMPLETE (2)	NS	SI7545S	STEEL RETAINER 7/8" x 3 1/4"
15	SI7515	HANDLE BOLT	46	SI7546	STEEL RETAINER PLUNGER (2)
16	SI7516	HANDLE BOLT WASHER (2)	47	SI7547	RETAINER SPRING (2)
17	SI7517	HANDLE BOLT NUT	48	SI7548	STEEL RETAINER CAP (2)
18	SI7518	BLOW TUBE	49	SI7549	STEEL RETAINER BOLT(4)
20	SI7520	BLOW TUBE RUBBER SEAL	50	SI7550	STEEL RETAINER BOLT NUT(4)
21	SI7521	BLOW TUBE GLAND	51	SI7551	OIL FELT(2)
22	SI7522	BLOW TUBE GASKET	52	SI7552	SIDE ROD(2)
23	SI7523	AUTOMATIC VALVE	53	SI7553	SIDE ROD LOCK WASHER (2)
24	SI7524	FRONT VALVE CHEST	54	SI7554	IDE ROD BOLT NUT(2)
25	SI7525B	REAR VALVE CHEST	NS	SI7334	UNIVERSAL WATER CONNECTION
26	SI7526B	VALVE GUIDE	18W	SI7518W	WATER TUBE
27	SI7527	RIFLE BAR	21W	SI7521W	WATER TUBE GLAND
28	SI7528	PAWL (NON-REVERSIBLE) (3)	NS	SI7556	MUFFLER
29	SI7529	PAWL PLUNGER (3)	NS	SI9019	BIO OIL ROCK DRILL ISO 150 1 GAL
30	SI7530	PAWL SPRING (3)	NS	05019902 0002	6' 3/4" WHIP HOSE W CF OILER
31	SI7531B	RATCHET RING			